



Fashion Design


Fashion Design

Traditional Costumes with a Modern
Touch

- A. Different types of traditional
Costumes
- B. Fashion illustration



■ 設計師 Marjan Pejski ◦



Different Styles of Traditional Costumes

Chinese Style --- Sam Fu

Cheong Sam

Japanese Style --- Kimono Design

Malaysian Style --- Malay Costumes

Traditional Sam- Fu

(Chinese Style)

Sam-Fu is used as a main garment for Chinese woman in olden days. But it may be fashioned with different colors at the top and the bottom.





Stand-up
Collar

Peter-Pan
Collar

Flare Sleeve

Facing



Flower
Chinese
Knot

Various Types of Cheong

Sam (Chinese Style)

The name
“cheongsam,”
meaning simply
“long dress.”

Its neck is high,
collar closed.

The dress is
buttoned on
the right side.



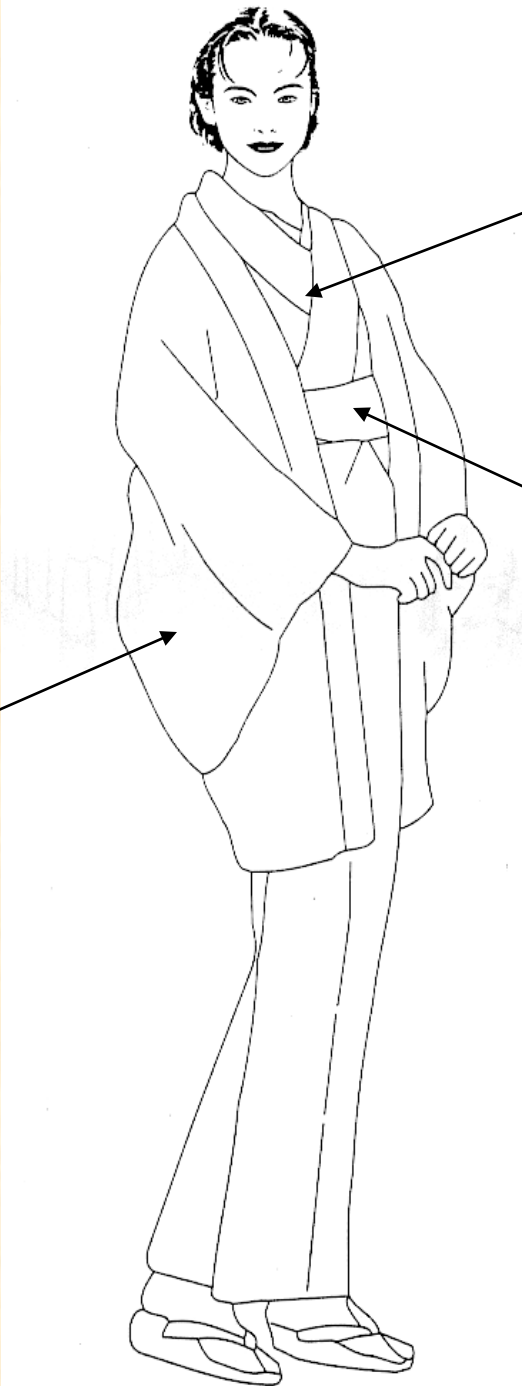
Kimono Design (Japanese Style)

It is made of patterned half silk with a soft lining. The Kimono is always worn with a belt or a wide sash.

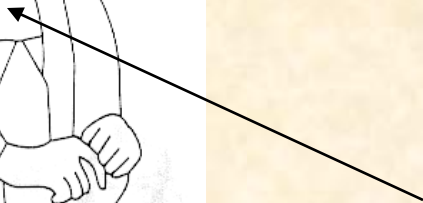




Kimono
Sleeve



V-Shaped
neckline



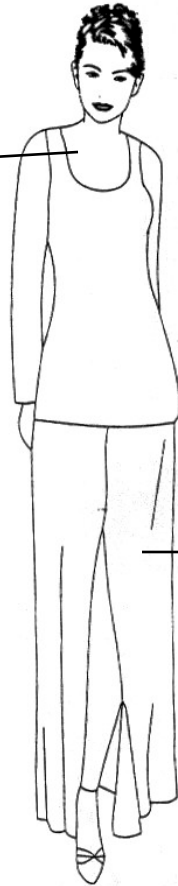
Belt or Wide
Sash



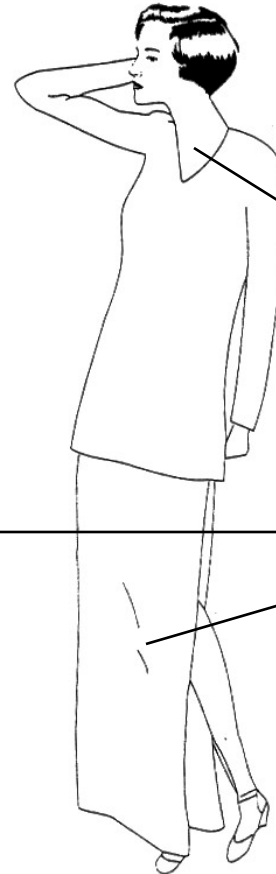
A Modern Dress with a touch of Traditional
Costumes of China

Various Types of Malay Costumes –Female

U-Shaped
Neckline



V-Shaped
Neckline



Sarong



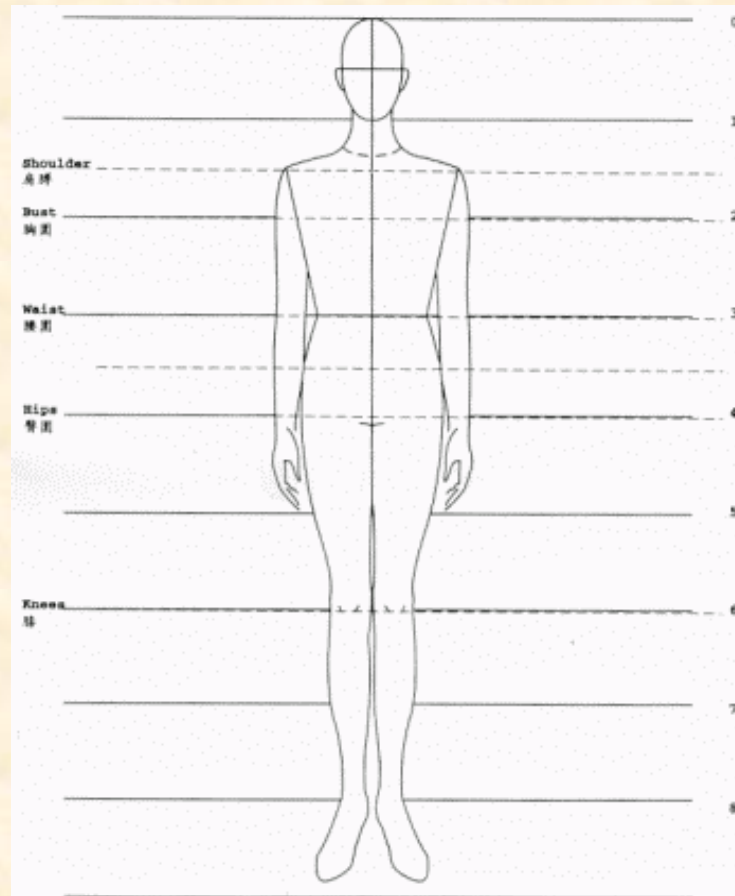
B. Fashion Drawing



The main purpose
of all types of
fashion drawing is
to *show a fashion*
idea on paper where
it is available to any
viewer.

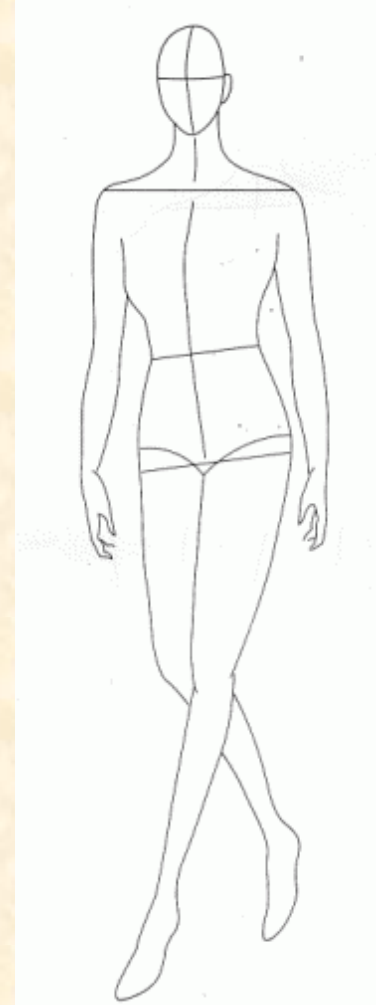
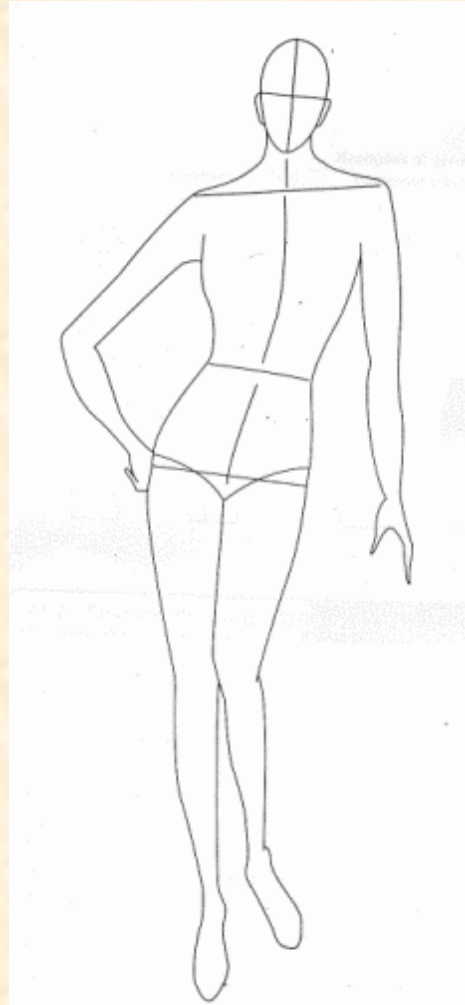
Fashion Drawing

a. Fashion Figure Drawing



**Eight-head
Figure
Proportion
(Front View)**

Standing Pose of Female



Standing Pose of Male



87,6



14



50

66



38

60



60

60



58

60



±9

71

So



6243-1A



天色

61.3



74
65

61

66.6

70-10

60



white colour

Katherine
NONG-CHAU SHEUNG
61242/2A (31) 姜秋輝

9319 2683